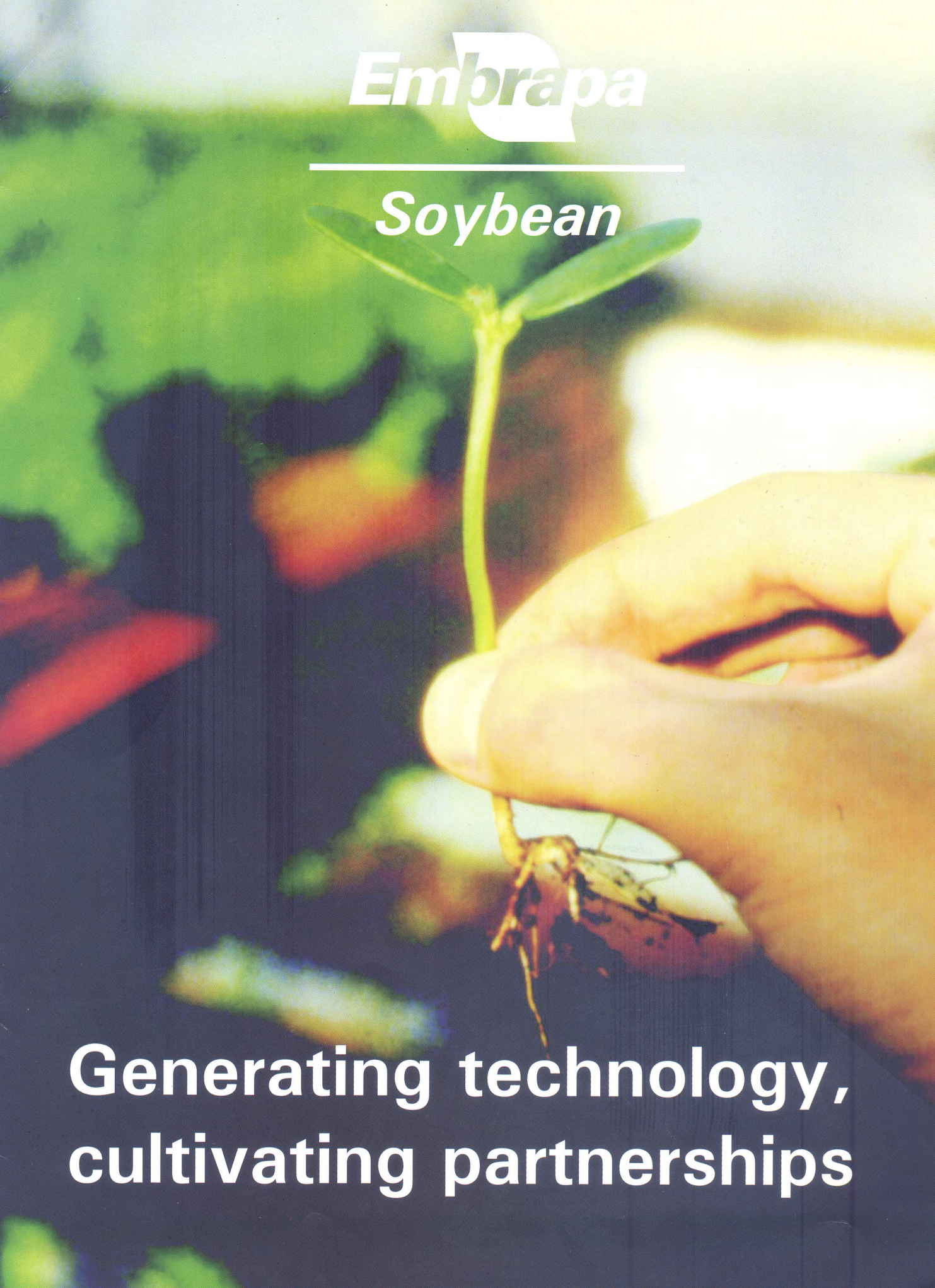




Embrapa

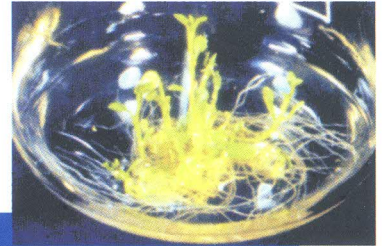
Soybean



**Generating technology,
cultivating partnerships**

Main Technologies, Recommendations

Technology for seed production and storage: high vigor and germination in tropical and subtropical regions.



Biotechnology: Search for innovation and focus on product quality and resistance inset pests and diseases.



Special cultivars for human consumption, soybean and derived products recipes, soybean culinary training: nutrition and health for Brazilians.

Breeding program : Over 200 cultivars adapted to tropical and sub tropical regions and resistant to the main diseases.



Sunflower: an alternative to diversify the agricultural production systems from north to south of Brazil.

Avoiding harvesting losses: A method to determine the soybean harvesting losses and

indication of procedures for its reduction.

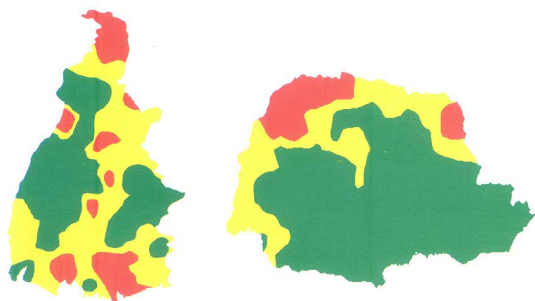


Biological nitrogen fixation: higher yields, lower costs and crop production sustainability.



Wheat cultivars adapted to Parana State : productivity and quality

itions and Generated Knowledge

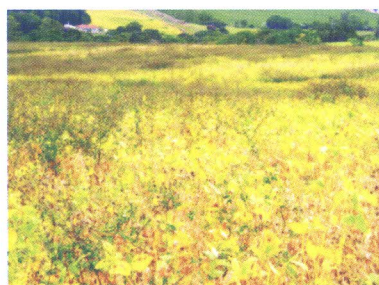
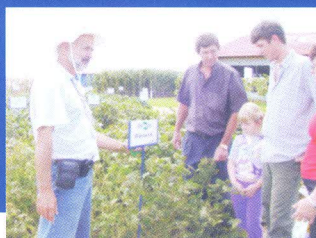


Agroclimatic zoning: Climatic risk reduction for soybean and sunflower.



Technology transfer: Strategies to improve technology adoption, such as training, field

days, demonstration plots and Training & visit (T&V) methodology.

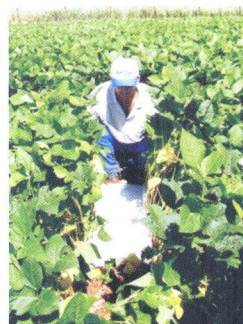


Integrated weed management: Herbicide use rationalization and improvement of weed control techniques.



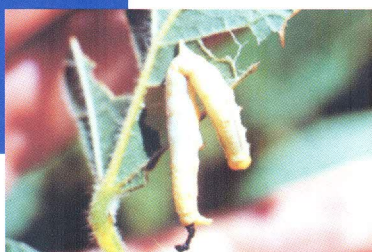
Diseases: Genetic resistance and cultural and chemical control methods.

Soil quality indicators, crop rotation, cover crops, and no tillage: Soil chemical and physical conditions recovery and preservation.



IPM - Integrated Pest Management: A combination of pest control strategies by rational use of agrochemicals and biological control.

Insects biological control: Less chemicals, better health with environment preservation.



Embrapa Soybean and the Community



**Embrapa & School :
Drawing the future.**



Participation in community events: Interaction with the public, making technologies popular.

Preparation of the youngsters for the professional life: Offering competence and social inclusion.



Soybean culinary: Training monitors all over Brazil.



Training Programs: Integration with universities for technical, cultural, scientific, and human relations improvement.

Employees: Commitment and development of skills

Developing competence: Source of knowledge and a strategy for professional fulfillment and efficiency.



Benefits : Stance towards health care, safety and leisure.



Working atmosphere: Dialog, participation and responsibility.

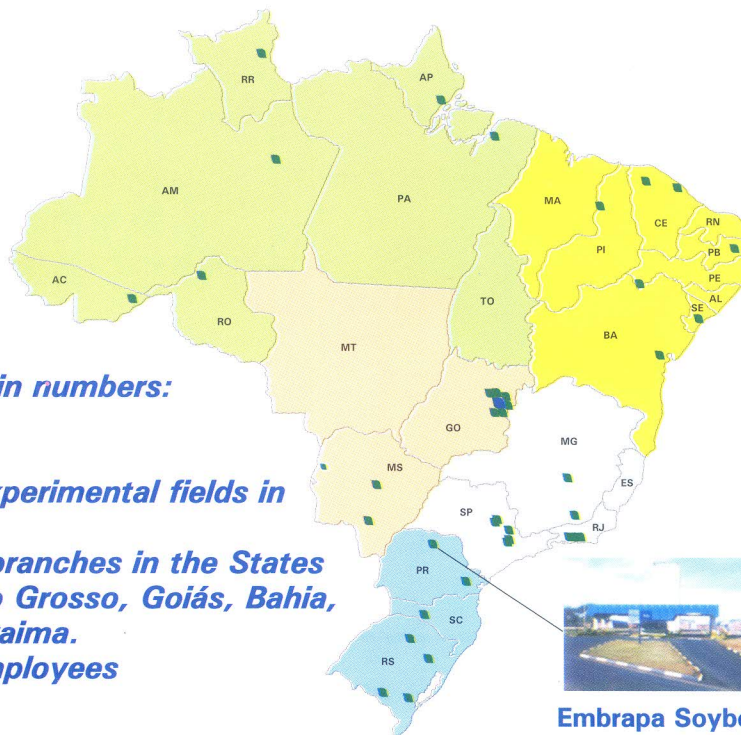


Commitment with environmental issues.



**Live green
A wood planted
by Employees.**





Embrapa Soybean in numbers:

24 laboratories

25 green houses

350 hectares of experimental fields in Londrina, Paraná.

Research support branches in the States of Maranhão, Mato Grosso, Goiás, Bahia, Minas Gerais e Roraima.

303 specialized employees

Embrapa Soybean, established in April 1975.

Another Embrapa unities

Important challenges: Vision on the future:

- sustainable soybean and sunflower crops, especially on agricultural frontier regions;
- development of soybean and sunflower cultivars for human consumption, animal feed markets and for alternative utilization, including biofuel;
- increase in research and technology transfer activities on sustainable agricultural practices such as crop rotation, no tillage and cover crops.
- disease control - Asian soybean rust.
- intensification of research on biotechnology as a tool to support soybean genetic improvement programs, searching for knowledge on genomics and identifying genes to improve soybean quality and agronomic characteristics.
- Development of new alternatives for seed packing and storage, aiming the maintenance of high vigor and good germination on tropical regions.
- Reinforcement of actions to increase commercial competitiveness of soybean, sunflower and wheat in the national and international markets;
- Improvement of administrative procedures focusing on permanent consideration towards the employees, humanistic vision and social responsibility regarding talent management and natural resources handling.

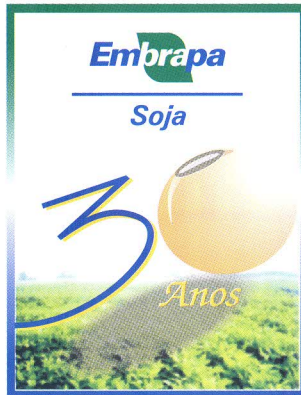


Our principle: Partnerships with the public and private sectors on technical assistance, training and education.



**Brazilian Agricultural Research Corporation
National Soybean Research Center**

Rod. Carlos João Strass - Distrito de Warta
Fone: (43) 3371-6000 Fax: (43) 3371-6100
Caixa Postal 231 - 86001-970 Londrina PR
Home page: <http://www.cnpso.embrapa.br>
E-mail: sac@cnpso.embrapa.br



Embrapa Soybean 30 years:
generating technology and
cultivating partnerships.

Support:



Folder nº 11/2005
Dezembro de 2005
Tiragem:
1.000 exemplares

**Ministry of Agriculture,
Livestock and Food Supply**

